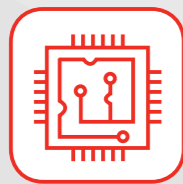


2D Wireless Barcode Scanner

DBS HC-3208 RC Cradle



Bluetooth



2.4G



USB&RS232



1D & 2D code



Certificate

Features

- Read 1D and 2D code on screen and paper.
- Easy and fast to pairing and uploaded data via cradle.
- Ergonomics unique design, comfortable operating sense.
- Support charge in Cradle or typeB cable.
- Super battery capacity is up to 2200mAh.
- Charge time is 4 hours and continuous scanning time is 24hours.
- Support double firmware upgrade online: wireless and decoder.
- Communication model: 2.4G, bluetooth and typeB cable.
- Support offline storage mode, storage capacity up to 380000 characters.
- Communication distance(open air) : 2.4G:100meters,Bluetooth: 40meters.
- Three LED indicator : Green(decoder light) Red(charge light), Blue(Connection success).
- Support screen display (1.44 inch color screen), real-time observation of battery power, communication status and each batch of bar code data. (optional).

Application field

Mainly used in logistic, health care, tobacco, warehouse, etc.

Technical Specification

OPERATIONAL PARAMETER

Image (pixels)	640 pixels(H)*480 pixels(v)/1280 pixels(H)*800 pixels(V) optional
Light Source	Aiming:617 nm LED ;illumination:4000K LED
Image Sensor	CMOS
Scan Speed	30fps/s
Depth of Filed	40-200mm@UPC/EAN13mil PCS=90%; 20-250mm@QR 20mil PCS=100%
Scan Angle	Elevation angle 65°/Tilt angle 30°/Declination 55°
Field of view	34° horizontal, 28° vertical
Read Resolution	More than 4 mil
Print Contrast	More than 25%
Visual Indicator	Blue LED Light,Red charge light, Buzzer and vibration
Communication model	2.4G , blue BLE4.0 and TypeB
Communication Distance	2.4G: 100meters (open air) ,Bluetooth: 40meters (open air)
Memory capacity	Up to 512000bits (38000 EAN 13 codes)

PHYSICAL CHARACTERISTICS

Dimension H x W x L:	Scanner:175mm*66mm*90mm(L*W * H) Cradle:122mm*94mm*75mm(L*W*H)
Weight	Scanner:202g Cradle:194g
Cable	Standard 1.5M straight
Material	ABS + PC

POWER PARAMETER

Input Voltage	5VDC±10%
Working current	400mA

ENVIRONMENTAL PARAMETER

Operating Temperature	-20°C ~+60°C
Working Humidity	5% to 95% relative humidity, non-condensing
Storage Temperature	-40°C ~+70°C
Light Levels	0~100,000Lux(Daylight)
Drop Durability	Designed to withstand 2 Meters drop

BARCODE TYPES

1D : UPC/EAN/JAN,UPC-A & UPC-E, EAN-8 & EAN-13, JAN-8 &JAN-13, ISBN/ISSN, Code 39 (with full ASCII), Codabar (NW7), Code 128 & EAN 128, Code 93, Interleaved 2 of 5 (ITF),Addendum 2 of 5, IATA Code, MSI/ Plessy, China Postal Code,Code 32 (Italian Pharmacode), RSS 14, RSS Limited, RSS Expanded

2D: QR Code, Data Matrix, PDF417, Aztec, Maxicode, GS1 DataBar stack, Micro QR, DOTCODE.